

This conference is a one-day educational opportunity to provide current issues and trends related to the trauma patient.

Objectives

- Discuss current methods of diagnosis and management of patients with traumatic, complex injuries
- Discuss the pre-hospital and hospital practices routinely given to patients with traumatic injuries
- Identify complications related to the care of the trauma patient

Who Should Attend

Nurses involved in caring for the adult and pediatric trauma patient.

Pre-hospital providers interested in expanding their knowledge of caring for the trauma patient and related topics.

Accreditation

This activity has been submitted to the Maryland Nurses Association for approval to award seven contact hours. The Maryland Nurses Association is accredited as an approver of continuing nursing education by the American Nurses Credentialing Center's Commission on Accreditation.

Pre-hospital Care Providers

Seven hours of trauma credits will be awarded at the completion of the conference.

Conference Location

Clarion Resort Fontainebleau Hotel, 10100 Coastal Highway, Ocean City, Maryland will be the site for Peninsula Regional's 26th Annual Topics in Trauma Conference. The Clarion is Ocean City's finest full-service hotel. The oceanfront hotel with its 40,000-square-foot conference center provides an ideal location for the conference.

Hotel Accommodations

Rooms have been reserved at a special rate of \$135 plus tax for a double until August 23, 2016, so make your arrangements early. Refer to the Peninsula Regional Trauma Conference when making reservations at the Clarion Resort Fontainebleau Hotel, 1-800-638-2100.

Exhibitors

An array of vendors are expected to exhibit. This is an excellent opportunity to network with available resources.



All proceeds will go to Peninsula Regional Medical Center Foundation for Trauma Education.

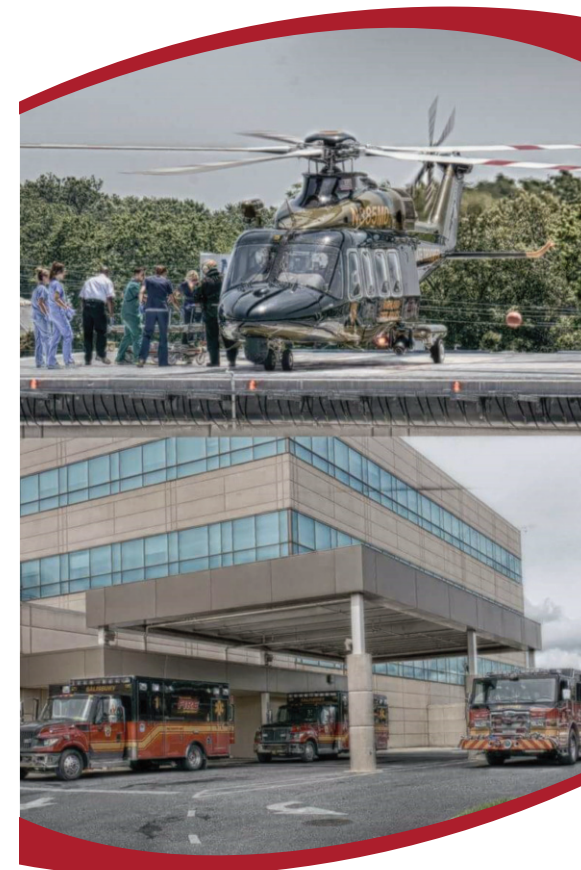
EXCEPTIONAL HEALTHCARE. EXCEPTIONAL PEOPLE.



100 East Carroll Street • Salisbury, MD 21801-5493
410-546-6400 • 1-800-955-PRMC (7762)
TTY/TDD 410-543-7355
www.peninsula.org

EDUCATION

26th Annual PRMC TOPICS IN TRAUMA



September 23, 2016

EXCEPTIONAL HEALTHCARE. EXCEPTIONAL PEOPLE.



2016 PRMC Trauma Conference Schedule

- 0715-0755 Registration/Breakfast**
- 0755-0800 Opening Remarks**
- 0800-0900 On the Edge of Homicide: Strangulation as a Prelude**
Pamela Holtzinger, RN, MSN, BHA, CEN, FNA A&P, SANE-A, SANE-P
Coordinator, Forensic Nurse Program
Frederick Memorial Hospital
- 0900-1000 Unstable Pelvic Injuries, a life or death emergency with a case presentation**
Timothy S. Arnett, BS, NREMT-P
Captain, Anne Arundel County Fire Department
- 1000-1015 Break**

TRACK 1

- 1015-1115 Blood Goes Round and Round. Any Variation on this is a Bad Thing.**
Kevin Pearl, MD, MS
Clinical Assistant Professor of Emergency Medicine, University of Maryland
Emergency Medicine Associate Medical Director, Talbot County Department of
Emergency Services
&
David Timms, BS, NRP
Captain, Talbot County Department of Emergency Services
- 1115-1215 Blunt & Penetrating Chest Trauma Update From Basics to Cutting Edge**
Kerry A. Forrestal, MD/MBA, FACEP
Peninsula Regional Medical Center

TRACK 2

- 1015-1115 Halting the Hemorrhage: Pharmacologic Management of Severe Traumatic Bleeds**
Patrick Dougherty, PharmD, BCPS
Clinical Pharmacist-Emergency Medicine
Peninsula Regional Medical Center
- 1115-1215 Five Minute Fire Drills-Effortlessly Preparing Your Institution for Trauma Activations**
Cindy Colson, MSN, RN, NRP
Trauma Coordinator, Children's National Medical Center

- 1215-1315 Lunch**
- 1315-1415 Scoop, STOP, and Run: Pre-Hospital Trauma Care**
Ben Lawner, DO, MS, EMT-P, FACEP
Assistant Professor of Emergency
Medicine, University of Maryland
School of Medicine
- 1415-1515 Burn Disaster: Triage and Treatment in a Burn Mass Casualty Disaster**
Robert E. Guilday, MD, FACS
Associate Director, The Nathan Speare
Regional Burn Treatment Center,
Crozer-Chester Medical Center
&
Gerarda M. Bozinko, BSN, RN, CCRN
Burn Outreach Program
Coordinator/Clinical Educator, Burn
Center
- 1515-1530 Break**
- 1530-1630 SIZE MATTERS Overview of Pediatric Multi-System Trauma Patient**
Brion McCutcheon, MD, FACS
Trauma Program Medical Director
Peninsula Regional Medical Center

****Don't forget to complete evaluations****

PRMC TOPICS IN TRAUMA



CONFERENCE REGISTRATION FORM

(online registration recommended)

www.peninsula.org/events

Name _____

Address _____

City/State/Zip _____

Day Phone _____

Affiliation/Institution _____

Position/Title or Specialty _____

Email _____

EMS Provider #/PRMC Employee # _____

Please choose one:

- Track 1 Track 2

Conference Registration Fees:

- RN/EMS \$85.00
 Students (unlicensed) \$65.00 with student ID; students must register by mail to get discount

Please return completed form, along with payment, by **September 16** to:

Peninsula Regional Medical Center
100 East Carroll Street, Salisbury, MD 21801
Attn: Trauma Department

Make check payable to: Peninsula Regional Medical Center

For disability accommodations, please contact the trauma office at 410-912-2844.

Registrations are due by September 16, or until the conference is full.

Registration fee includes conference, exhibits, continental breakfast, buffet lunch, afternoon break with snacks, coffee, tea, iced tea, and water.

Handouts will not be available at the conference. Electronic copies will be available online prior to the conference for registrants to download and print themselves. A link to download the handouts will be sent by email to registrants the week prior to the conference.

Please note: Enrollment is **limited**, full registration fee must accompany registration form. Registrations will be accepted in the order received. Telephone registration for the conference will not be accepted. **Confirmation will be sent if e-mail address is provided.**

Refunds: No refunds will be granted.